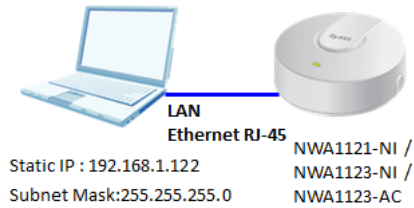


Knowledge Base

What is the procedure to recover the NWA1121-NI, NWA1123-NI, and NWA1123-AC via a TFTP server?

Scenario

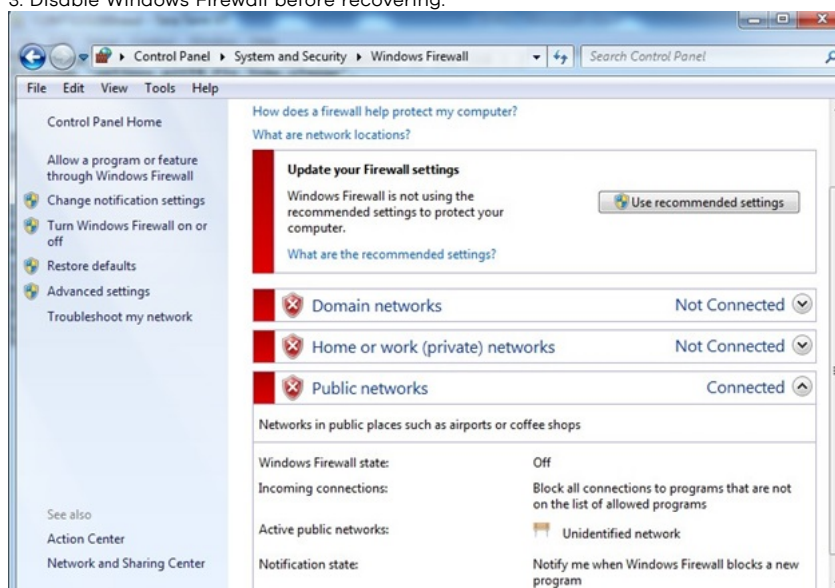
Topology:



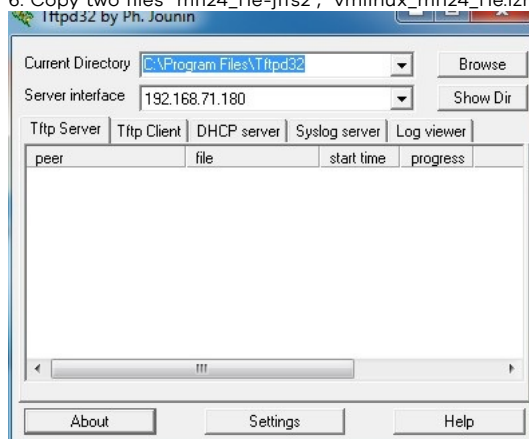
Step

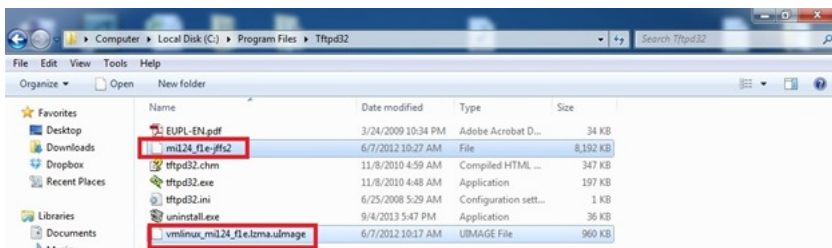
Steps:

1. Download the TFTP tool and run it on the laptop.
2. Connect a laptop wired to NWA1121-NI , NWA1123-NI or NWA1123-AC. Configure a static IP address on the laptop's NIC card. The IP address is 192.168.1.222 and Subnet mask is 255.255.255.0.
3. Disable Windows Firewall before recovering.



4. Unzip the image file. For example "V100AAEOX.bin" for NWA1123-NI , "V100AABJX.bin" for NWA1121-NI or "V100AAOXX.bin" for NWA1123-AC.
5. Unzip the image file. For example "V100AAEOX.bin" for NWA1123-NI , "V100AABJX.bin" for NWA1121-NI or "V100AAOXX.bin" for NWA1123-AC again.
6. Copy two files "mi124_f1e-jffs2", "vmlinux_mi124_f1e.lzma.ulmage" to the TFTP server folder.

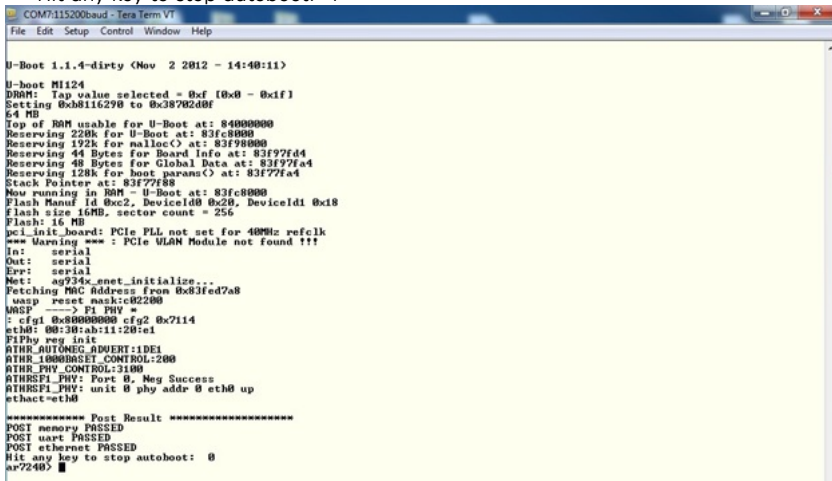




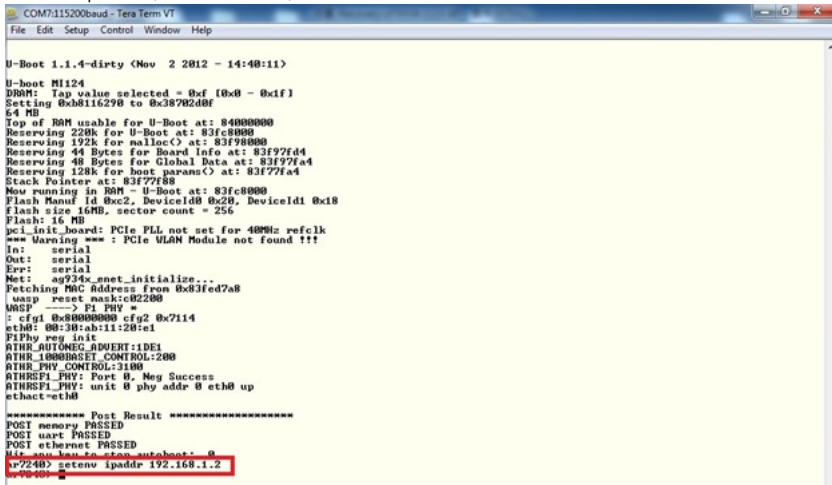
7. Connect to NWA1121-NI through a serial port. Setup the serial port for the baud rate 115200, data 8 bit, parity none and stop 1 bit.
8. Power-on the NWA1121-NI , NWA1123-NI, or NWA1123-AC.
9. Press any key before the prompt counts down to zero.

***** Post Result *****

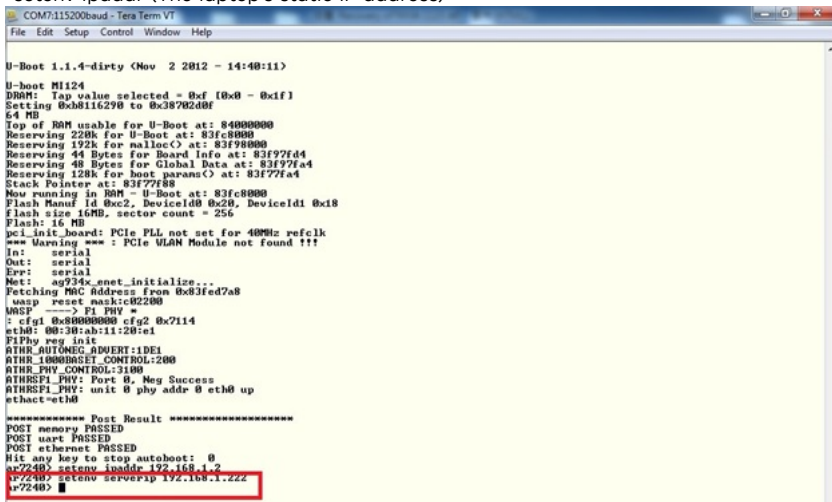
```
POST memory PASSED
POST uart PASSED
POST ethernet PASSED
Hit any key to stop autoboot: 4
```



10. Setup the IP address.
- >setenv ipaddr (AP IP address)



- >setenv ipaddr (The laptop's static IP address)



11. Upgrade the kernel.
- >run lk

Still have trouble with your device? Contact Zyxel technology support team directly!

[Contact Zyxel Support ▶ \(http://www.zyxel.com/form/contact_support.shtml\)](http://www.zyxel.com/form/contact_support.shtml)

http://www.zyxel.com/form/product_registration.shtml

Product Registration

http://www.zyxel.com/support/support_landing.shtml

Technical Support

http://www.zyxel.com/support/download_landing.shtml

Download Library

<http://forum.zyxel.com/>

Forum

http://www.zyxel.com/support/warranty_information.shtml

Warranty

http://www.zyxel.com/support/howto_video_list.shtml

Video

<http://service.zyxel.com/service/partner/login.php>

Education Center

<http://www.zyxel.com/support/announcement.shtml>

Announcements